



1280 N Red Gum Street Anaheim, CA 92806 • 714-632-1400

400 CFM MKVES(HV) Vapor Extraction Package / High Vacuum System

Standard Features:

- Small Footprint Skid Mounting
- Entrained Liquid Separator
- Dilution Filter / Valve
- Stainless Steel Transfer Pump
- Oil Sealed Liquid Ring Blower
- Oil Cooler Assembly
- 25 Horsepower TEFC Motor
- Pitot Tube / Magnahelic Gauge

Standard Options:

Air to Air Cooler System

Trailer Mounted System

Remote Telemetry

Totally Enclosed System

Single Phase System

Sound Enclosure

UL Listed Electrical Enclosure 306379



Standard Performance Specifications:

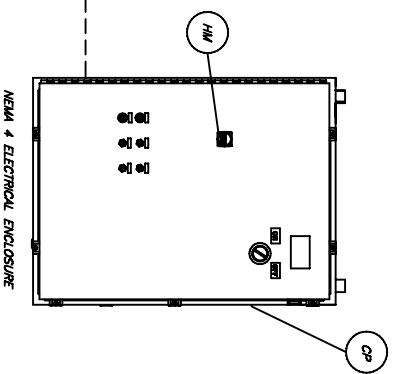
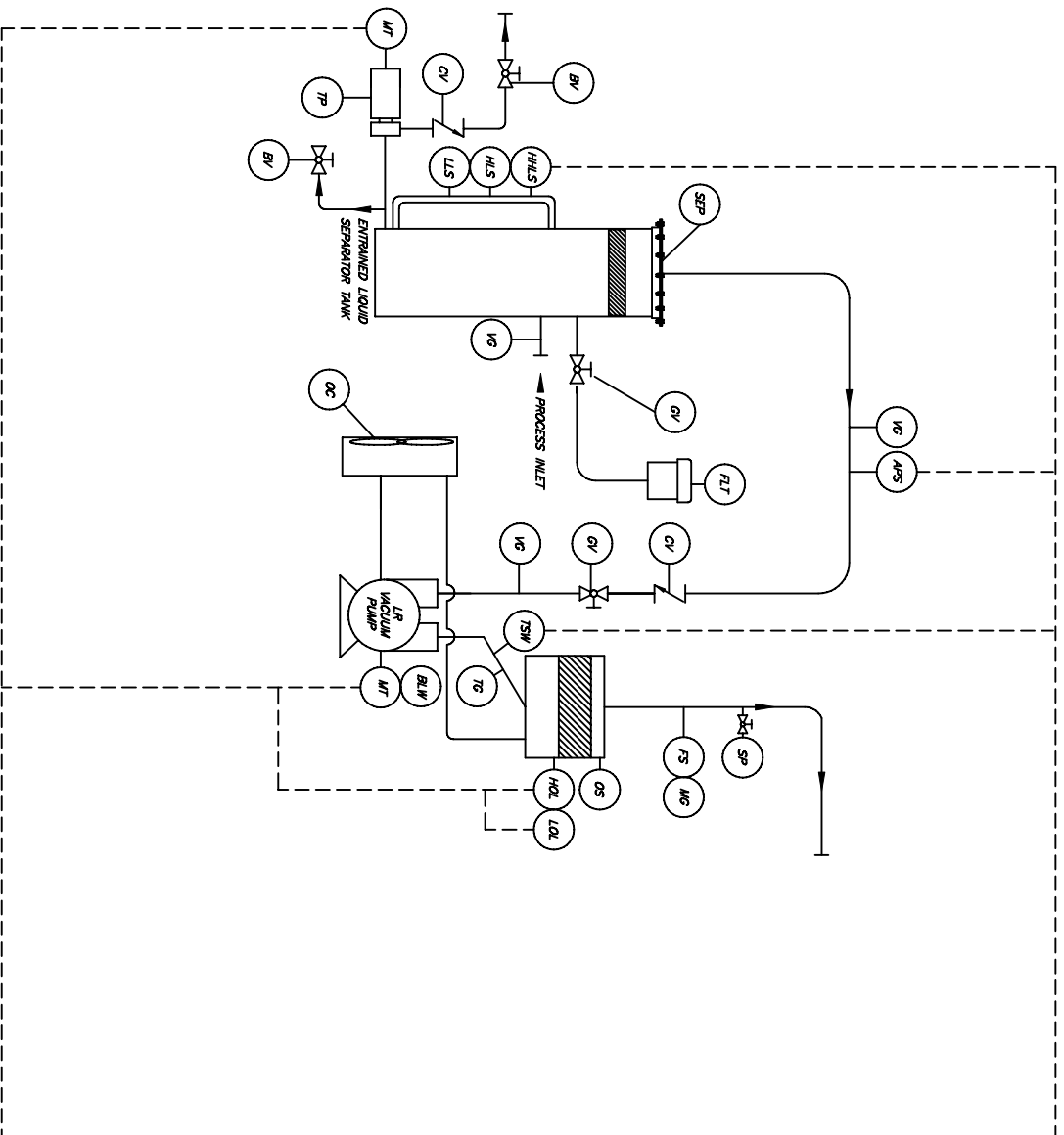
Skid Dimensions = 4' Width x 8' Length x 13' Height

3/16" Heavy Duty Steel Construction Throughout

Electrical Requirement = 208/240 Volt/3 Phase/100 Amp

Electrical Requirement = 208/240 Volt/1 Phase/150 Amp

Process Flow = 400 CFM and up to 28" Hg. Vacuum



MAKO INDUSTRIES

VAPOR EXTRACTION SYSTEM

PROCESS INSTRUMENTATION DRAWING

DATE:
9/15/08

FILE:
400 MKVES.PID

400 CFM MKVES(HV)